

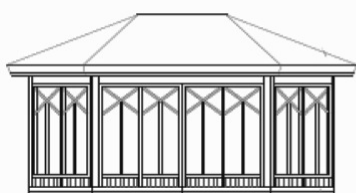
# Scandinavian Garden Pavilions

Made In Sweden

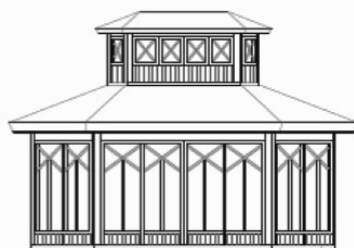
## Orangerie Price List

Updated 2/4/2016

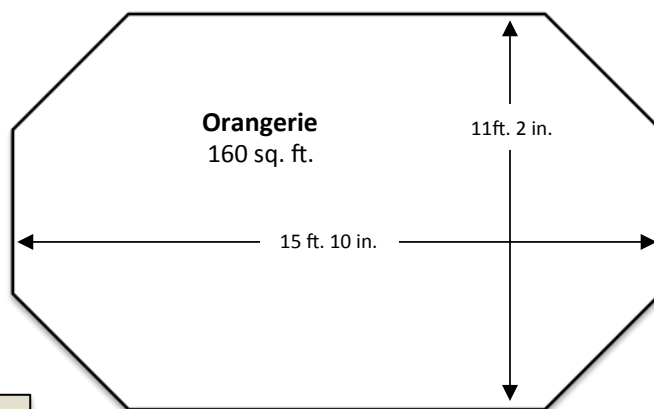
	Standard Model	Lanterna Model
	160 sq. ft.	160 sq. ft.
Base Price	\$25,000	\$35,000
Red Roofing Package (Custom Order)	\$650	\$650
White Pre-Painted Windows & Window Grilles (And Lanterna)	\$3,600	\$4,750



Standard Model



Lanterna Model



### Standard Specification

All Scandinavian Garden Pavilions are hand-built in the north of Sweden using locally harvested woods.

#### Construction

- Weathertight exterior of vertically-arranged tongue-and-groove Swedish spruce
- Smooth interior walls & ceiling paneled with Swedish spruce

#### Windows

- All 18 windows open with classic Scandinavian locking mechanisms
- Swedish pine curtain rods and full perimeter pine shelf
- Window frames of Swedish pine with removable grilles
- White lacquered metal window sills
- Tempered glass in main floor windows

#### Doors

- Double-doors with tempered glass and removable grilles
- Swedish lever-handle hardware and multi-point locking mechanism

#### Flooring

- Weathertight, nail-free, tongue-and-groove flooring of 7/8" Swedish pine
- Pressure-treated floor joists & beams for long life

#### Roof & Lanterna

- Lanterna (cupola) comes with 16 fixed-glass windows & removable mullions
- Lacquered metal ridge plates, eave plates & top plate flashing
- Black Norwegian shingle (red shingle optional)

### Additional Information

**Building Permits:** Typically, building permits are required for accessory structures 120 square feet or larger in many municipalities. Our Orangeries measure 160 square feet. In almost all cases, the exact location of your structure on your lot is subject to very specific setback requirements. In any case, it is important that you check with your local building department before beginning your installation.

**Installation:** It is most common for customers to hire a handyman or contractor to assemble and install their garden pavilion. If you live in the Greater Seattle Area, we recommend **Johnson Brothers Construction, our Authorized Installation Service** and winner of the Angie's List Super Service Award in 2011. If you choose to hire a "handyman" be sure the handyman has a helper. At the time of order we will provide you with detailed assembly instructions so that you can plan the project in advance.

**Foundation:** There are several alternatives depending upon your building site, climate and frost line considerations. Download our helpful Foundation Prep PDF document on the FAQ page of our web site, ScanPav.com, to learn more.

**Painting:** Your Pavilion is ready to paint upon delivery and some customers paint them prior to installation. We recommend painting as soon as possible to protect your investment and extend the life of your Pavilion. Contact a local painter or local paint store to learn about the best local products and solutions.

# Scandinavian Garden Pavilions

## Ordering Information

### To Place Your Order

It is very simple to order your Scandinavian Garden Pavilion. **Simply call us at +1 (425) 985-1249 or email us at [Info@ScanPav.com](mailto:Info@ScanPav.com)** to schedule a call so we can review any questions you have and walk you through the purchase process. If you live in the greater Seattle area you can arrange to visit our model pavilion for a hands-on look, to get a better idea of what makes these structures so unique and special.

### Deposit & Payment

A 50% deposit is required at the time of order paid by check or wire transfer. The balance is due prior to delivery to your building site. Prices are subject to change prior to deposit.

### Shipping Arrangements

At the time of your order, we will provide you with an estimated shipping date. Shipping dates can range between 2 (for Pavilions in our US inventory) and ~16 weeks for Pavilions ordered for delivery. We will remain in touch with you periodically during the waiting period to assist with planning. Two weeks prior to shipping, we will contact you to confirm the date, to inform you that the freight company will be contacting you to confirm delivery, and to collect payment of the 50% balance due. For more information on delivery process, see "Shipping Policy" below.

### Shipping Policy

Scandinavian Garden Pavilions can be shipped anywhere within the US or Canada from our Seattle warehouse. These shipping costs are not included in purchase prices and costs will vary depending upon the size of the Pavilion and the shipping destination. Shipping costs in the Greater Seattle Area can be in the \$200 to \$300 range.

All Pavilions shipped outside the Seattle Area are shipped via common freight carrier (by semi-trailer truck or similar vehicle) to the closest accessible curbside location as deemed by the delivering carrier. Optional lift-gate service can be provided for a nominal fee.

At the time of delivery, the Purchaser needs to have at least two strong people on hand and waiting to take the Pavilion off the truck. Pavilions are delivered on pallets in sections that weigh up to 120 pounds. Heavy-duty wire cutters (or tin snips) will be required to cut metal strapping securing the product to the pallet, and sections and pieces are then handled one piece at a time. An Orangerie can be unloaded in 45 - 60 minutes.

It is the Purchaser's responsibility to inform Scandinavian Garden Pavilions at the time of purchase of any challenging location or delivery issues so that accommodations can be made with the delivering carrier. These types of issues normally surface in our conversations prior to delivery.

### Cancellations & Returns

More than 1,000 of our Herrgård and Heritage Pavilions have been delivered over the past 20 years all across Northern Europe. Because Scandinavian Garden Pavilions are built-to-order and imported from Sweden, we do not allow cancellations or returns. All sales are final. Please be sure you have reviewed your local permit requirements prior to ordering. We value your business and we look forward to serving you and will review all of this during the purchase process. Please contact us in advance with any questions.

### Frequently Asked Questions

We know there is a lot to think about as you plan your garden pavilion project. We've prepared a FAQ (Frequently Asked Questions), updated routinely, to try to provide answers to many of the questions we hear. If the question you have is not answered in the FAQ, please email us at [Info@ScanPav.com](mailto:Info@ScanPav.com) or call us at +1 (425) 985-1249 so we can provide an answer.

**ScanPav.com**